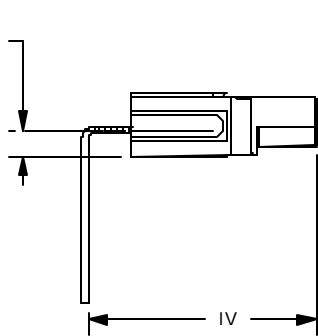
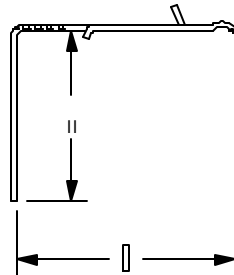
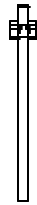


THE INFORMATION CONTAINED IN THIS DRAWING IS THE SOLE PROPERTY OF ANDERSON POWER PRODUCTS. ANY REPRODUCTION IN PART OR WHOLE WITHOUT THE WRITTEN PERMISSION OF ANDERSON POWER PRODUCTS IS PROHIBITED.

REV	DESCRIPTION OF CHANGES	BY:	DATE
5	ECRN: 13224- REDRAWN	CMS	6/30/99
6	ECRN 13312- ADD PCB SPACING	CMS	4/13/00
7	ECRN 13382- ADD DIMENSION	CMS	3/26/01
8	ECRN 13400	CMS	6/4/01
9	ECRN 13433	CMS	10/23/01

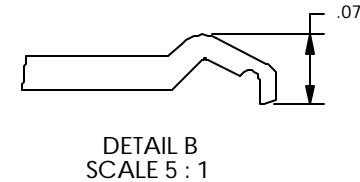
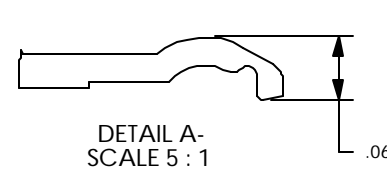
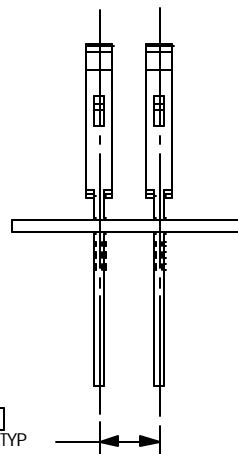
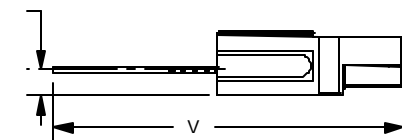
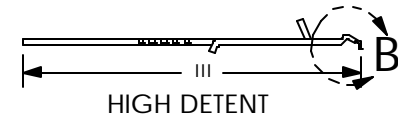
### RIGHT ANGLE BENT PINS

PART NO	I (IN)	I (mm)	II (IN)	II (mm)	IV (IN)	IV (mm)	DETENT
1377G1	1.46	36.8	.70	17.8	1.52	38.6	LOW
1377G2	1.30	33.0	.40	10.2	1.36	34.5	LOW
1377G11	1.14	29.0	.70	17.8	1.21	30.7	LOW
1377G14	1.30	33.0	.18	4.6	1.36	34.5	LOW
1377G15	1.14	29.0	1.02	25.9	1.21	30.7	LOW
1377G16	0.95	24.1	.72	18.3	1.00	25.4	LOW
1377G17	1.14	29.0	.88	22.4	1.21	30.7	LOW
1377G18	1.00	25.4	.58	14.7	1.07	27.2	LOW
1317G1	1.46	36.8	.70	17.8	1.52	38.6	HIGH
1317G2	1.30	33.0	.40	10.2	1.36	34.5	HIGH
1317G11	1.14	29.0	.70	17.8	1.21	30.7	HIGH
1317G14	1.30	33.0	.18	4.6	1.36	34.5	HIGH
1317G15	1.14	29.0	1.02	25.9	1.21	30.7	HIGH
1317G16	0.95	24.1	.72	18.3	1.00	25.4	HIGH
1317G17	1.14	29.0	.88	22.4	1.21	30.7	HIGH



### STRAIGHT PINS

PART NO.	III (IN)	III (MM)	V (IN)	V (MM)	DETENT
1377G3	2.16	54.9	2.22	56.4	LOW
1377G4	1.70	43.2	1.76	44.7	LOW
1317G4	1.70	43.2	1.76	44.7	HIGH
1317G3	2.16	54.9	2.22	56.4	HIGH
1377G13	1.11	28.2	1.17	29.7	LOW
1317G13	1.11	28.2	1.17	29.7	HIGH



ANDERSON POWER PRODUCTS RESERVES THE RIGHT TO ALTER PRODUCT TYPES, THEIR TECHNICAL DATA, DIMENSION, STYLE AND ACCESSORIES WITHOUT PRIOR NOTIFICATION.

NOTES:  
HOLE SIZE FOR PCB IS .070 (1.8).

US PATENT NO. 5,458,510

ITEM NO.	PART OR IDENTIFYING NO.	NOMENCLATURE OR DESCRIPTION	MATERIAL SPECIFICATION	QTY RECD
COPYRIGHT 1999 ANDERSON POWER PRODUCTS. ALL RIGHTS RESERVED. UNAUTHORIZED REPRODUCTION HEREBY PROHIBITED.				
DIMENSIONS ARE IN INCHES DIMENSIONS IN PARENTHESES ] ARE IN MILLIMETERS		CAD GENERATED DRAWING, DO NOT MANUALLY UPDATE		ANDERSON POWER PRODUCTS
TOLERANCES ARE: 2PL- ±.02 [±.5]		APPROVALS	DATE	
MATERIALS: <b>COPPER</b>		DRAWN	RLE 3/9/93	CATALOG NUMBERS 1377 AND 1317 25 AMP PCB CONTACTS STRAIGHT AND RIGHT ANGLE BENT
FINISH: <b>TIN PLATE</b>		CHECKED	DJD 10/9/01	
NEXT ASSY USED ON		RESP ENG	UFN 3/9/93	
APPLICATION		MFG ENG	CHB 3/9/93	SIZE A
DO NOT SCALE DRAWING		QUAL ENG	HN 3/9/93	SPECIFICATION: 113881S1
		SCALE NONE CADFILES/01064		REV. 9
				SHEET 1 OF 1