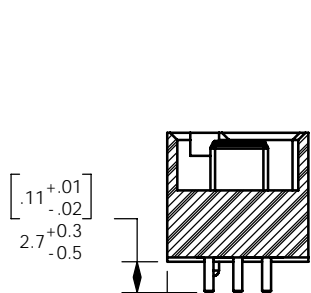


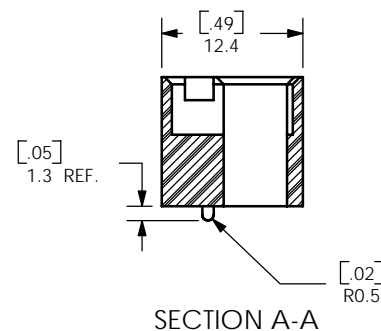
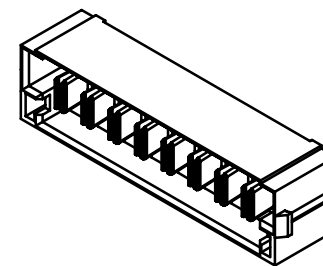
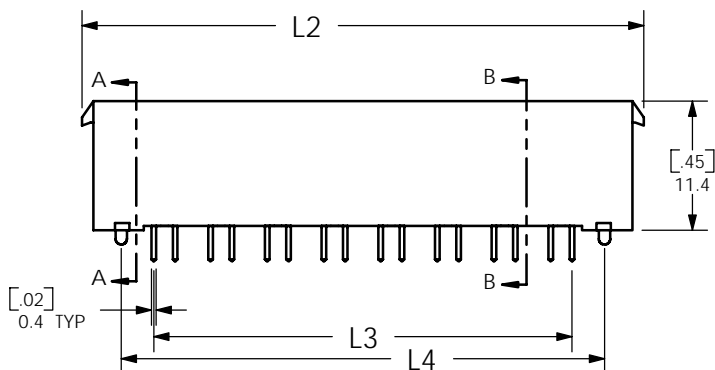
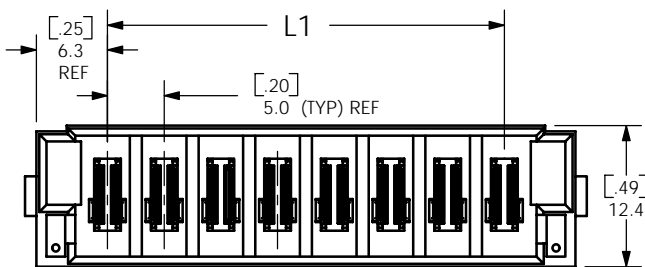
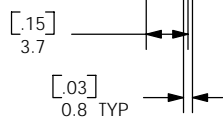
THE INFORMATION CONTAINED IN THIS DRAWING IS THE SOLE PROPERTY OF ANDERSON POWER PRODUCTS. ANY REPRODUCTION IN PART OR WHOLE WITHOUT THE WRITTEN PERMISSION OF ANDERSON POWER PRODUCTS IS PROHIBITED.

Copyright 2008

ANDERSON POWER PRODUCTS RESERVES THE RIGHT TO ALTER PRODUCT TYPES, THEIR TECHNICAL DATA, DIMENSION, STYLE AND ACCESSORIES WITHOUT PRIOR NOTIFICATION.



SECTION B-B



SECTION A-A

# OF POS	L1		L2		L3		L4	
	mm	in	mm	in	mm	in	mm	in
2	5.0	0.20	19.6	0.77	6.9	0.27	12.6	0.50
4	15.0	0.59	29.6	1.17	16.9	0.66	22.6	0.89
6	25.0	0.98	39.6	1.56	26.9	1.06	32.6	1.28
8	35.0	1.38	49.6	1.95	36.9	1.45	42.6	1.68

Male Power Connector- Vertical Tail- Ordering Information											
	P	M	-	XX	P	V	01	-	0	YY	
											00- No board Mount Hardware
POWER											01- Locking Clip*
	GENDER: MALE										No Latch
QTY OF CONTACTS:02,04,06,08						LEAD LENGTH, 01=.062 PCB					
TIN (T) or Gold (L)* Plating						VERTICAL TAIL					
* Contact Factory											

NOTES:

- MATERIAL:
HOUSING-LCP,BLK
POWER CONTACT-COPPER ALLOY
- CONTACT PLATING:
MATTE TIN
- MINIMUM PUSHOUT FORCE: 4.45N[1.0 LB-F].
- PARTS TO BE PACKAGED IN TRAYS.
- EACH GROUP HOLDS ONE POWER PIN

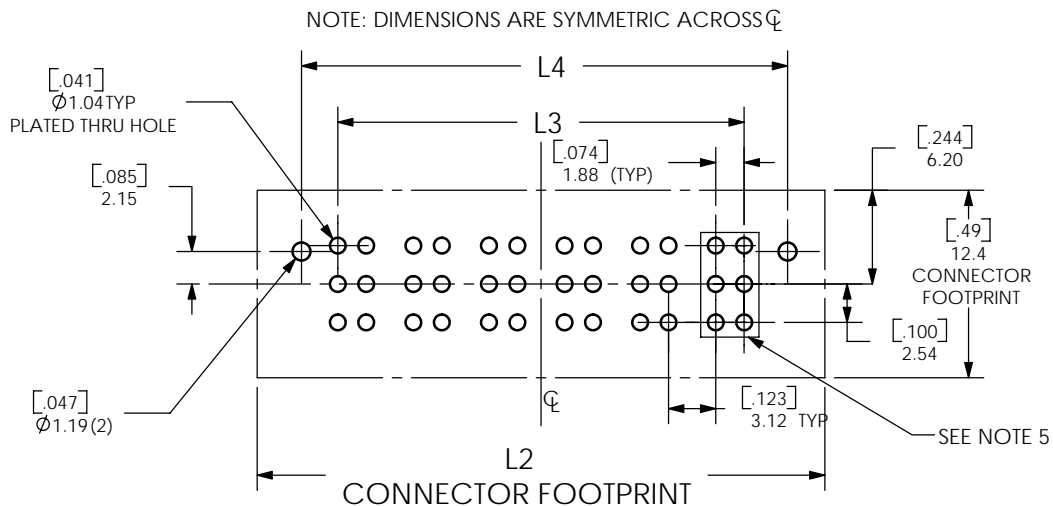
DIMENSIONS ARE IN: MM[INCH]	APPROVALS		ANDERSON POWER PRODUCTS TITLE POWERMOD PSX MALE VERTICAL POWER
UNLESS OTHERWISE STATED	DRAWN	08/04/08	
TOLERANCES: DECIMALS (INCH) DECIMALS (MM) ANGLES XX ±.02 X ±.5 ±2°	CHECKED	08/01/08	
SURFACE FINISH: MACHINED 128 [3.2] MOLDED 64 [1.6]	MFG APP	08/01/08	
MATERIAL: SEE NOTES	QC APP	08/01/08	SIZE A/A4 DWG NO. 114790S1 REV. 1
FINISH: SEE NOTES	ENG APP	08/01/08	
3rd ANGLE PROJECTION	CAD GENERATED DRAWING: DO NOT MANUALLY UPDATE DO NOT SCALE		SCALE NONE CADFILE 02807 SHEET 1 OF 2

1	ECRN 14365: ADD DIMS	CMS	1/05/09
REV.	DESCRIPTION OF CHANGES	APPROVED	DATE

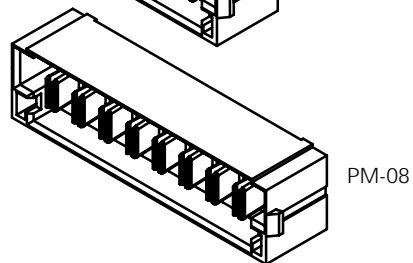
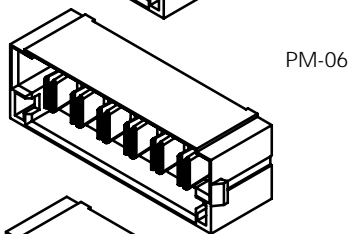
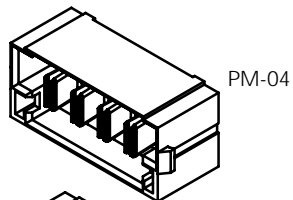
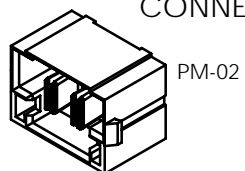
THE INFORMATION CONTAINED IN THIS DRAWING IS THE SOLE PROPERTY OF ANDERSON POWER PRODUCTS. ANY REPRODUCTION IN PART OR WHOLE WITHOUT THE WRITTEN PERMISSION OF ANDERSON POWER PRODUCTS IS PROHIBITED.

Copyright 2008

ANDERSON POWER PRODUCTS RESERVES THE RIGHT TO ALTER PRODUCT TYPES, THEIR TECHNICAL DATA, DIMENSION, STYLE AND ACCESSORIES WITHOUT PRIOR NOTIFICATION.



CONNECTOR VERSIONS



# OF POS.	L2		L3		L4	
	mm	in	mm	in	mm	in
2	19.6	0.77	6.88	0.271	12.62	0.497
4	29.6	1.17	16.88	0.665	22.62	0.891
6	39.6	1.56	26.88	1.058	32.62	1.284
8	49.6	1.95	36.88	1.452	42.62	1.678

DIMENSIONS ARE IN:		MM [INCH]	APPROVALS		<p>ANDERSON POWER PRODUCTS</p> <p>TITLE POWERMOD PSX MALE VERTICAL POWER</p>
UNLESS OTHERWISE STATED			DRAWN	LBF 8/1/08	
TOLERANCES:			CHECKED	CMS 8/1/08	
DECIMALS (INCH) DECIMALS (MM) ANGLES .XX ± .02 .X ± .5 ± 2°			MFG APP	CHB 8/1/08	
SURFACE FINISH:			QC APP	UFN 8/1/08	SIZE DWG NO. REV. A/A4 114790S1 1
MACHINED 128 [3.2] ✓			ENG APP	DAM 8/1/08	
MOLDED 64 [1.6] ✓			CAD GENERATED DRAWING - DO NOT MANUALLY UPDATE DO NOT SCALE		
MATERIAL: SEE NOTES			SCALE		CADFILE SHEET 02807 2 OF 2
FINISH: SEE NOTES			NONE		

SEE SHEET 1

REV.	DESCRIPTION OF CHANGES	APPROVED	DATE
8			
7			
6			
5			

