

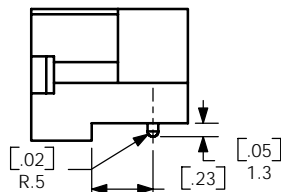
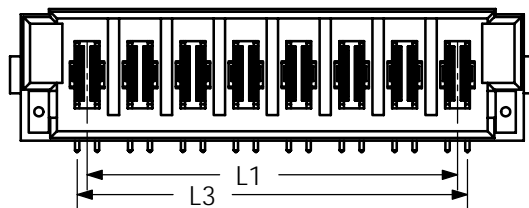
THE INFORMATION CONTAINED IN THIS DRAWING IS THE SOLE PROPERTY OF ANDERSON POWER PRODUCTS. ANY REPRODUCTION IN PART OR WHOLE WITHOUT THE WRITTEN PERMISSION OF ANDERSON POWER PRODUCTS IS PROHIBITED.

Copyright 2008

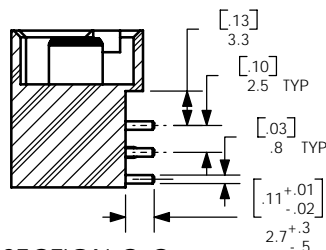
ANDERSON POWER PRODUCTS RESERVES THE RIGHT TO ALTER PRODUCT TYPES, THEIR TECHNICAL DATA, DIMENSION, STYLE AND ACCESSORIES WITHOUT PRIOR NOTIFICATION.

**NO BOARD HARDWARE , YY=01**

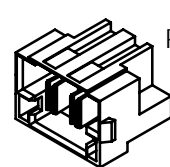
**CONNECTOR VERSIONS**



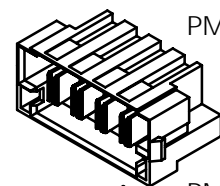
NOTE: CONTACTS REMOVED FOR CLARITY



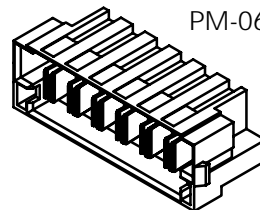
SECTION C-C



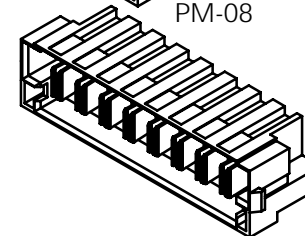
PM-02



PM-04



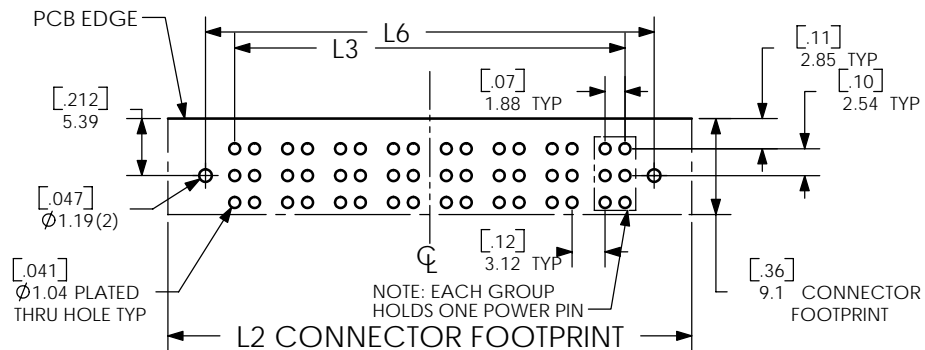
PM-06



PM-08

# OF POS	L1		L2		L3		L6	
	mm	in	mm	in	mm	in	mm	in
2	5.0	0.20	19.5	0.77	6.9	.27	21.4	.84
4	15.0	0.59	29.5	1.16	16.9	.66	31.4	1.24
6	25.0	0.98	39.5	1.56	26.9	1.06	41.4	1.63
8	35.0	1.38	49.5	1.95	36.9	1.45	51.4	2.02

RECOMMENDED PCB LAYOUT  
NOTE: DIMENSIONS ARE SYMMETRIC ACROSS C



NOTE: EACH GROUP HOLDS ONE POWER PIN

Male Power Connector- Right Angle Tail- Ordering Information										
	P	M	-	XX	P	R	01	-	0	YY
POWER										01- No Board Hardware 02-Screw Down
GENDER: MALE										No Latch
QTY OF CONTACTS:02,04,06,08							LEAD LENGTH, 01= .062 PCB			
TIN (T) or Gold (L)* Plating							RIGHT ANGLE TAIL			
* Contact Factory										

- NOTES:  
1. MATERIAL:  
HOUSING-LCP,BLK  
POWER CONTACT-COPPER ALLOY  
2. CONTACT PLATING: MATTE TIN OR GOLD  
3. MINIMUM PUSHOUT FORCE: 4.45N[1.0 LB-F].  
4. PARTS TO BE PACKAGED IN TRAYS.

DIMENSIONS ARE IN:		MM[INCH]		APPROVALS		ANDERSON POWER PRODUCTS		
UNLESS OTHERWISE STATED				DRAWN	CMS	9/11/08		
TOLERANCES:				CHECKED	DJD	11/18/08		
DECIMALS (INCH)	DECIMALS (MM)	ANGLES		MFG APP	CHB	11/19/08		
XX ± .02	X ± .5	±2°		QC APP	UFN	11/19/08		
SURFACE FINISH:				ENG APP	DAM	11/19/08		
MACHINED 128 [3.2]						SIZE	DWG NO.	REV.
MOLDED 64 [1.6]						A/A4	114791S1	1
MATERIAL: SEE NOTES						SCALE	CADFILE	SHEET
FINISH: SEE NOTES						NONE	02806	1 OF 2

REV.	DESCRIPTION OF CHANGES	APPROVED	DATE
1	ECRN 14365: ADD DIMS, REDUCE TO 2 SHEETS	CMS	1/05/09

3rd ANGLE PROJECTION  
-CAD GENERATED DRAWING- DO NOT MANUALLY UPDATE DO NOT SCALE

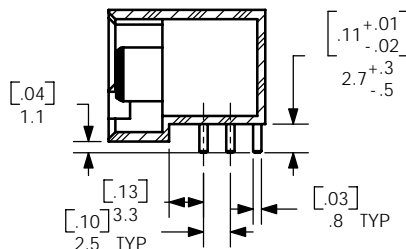
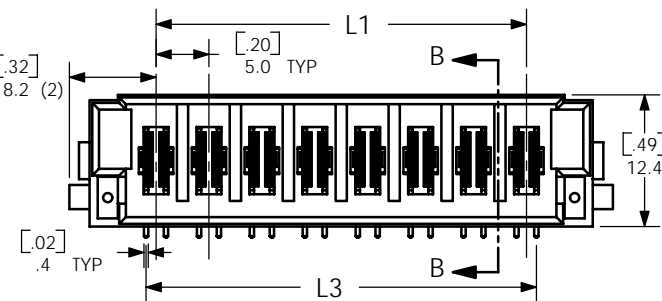
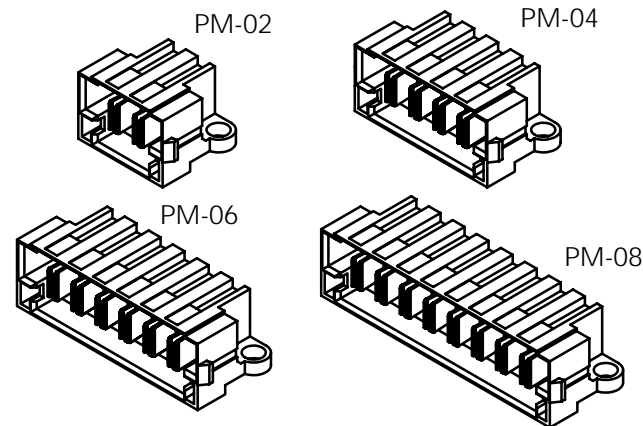
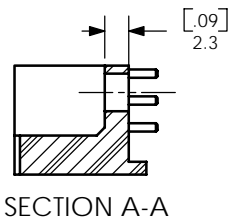
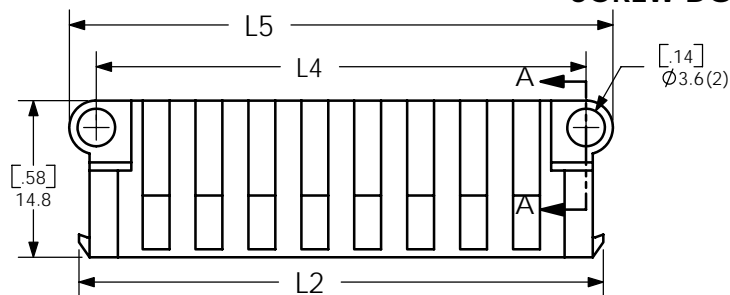
THE INFORMATION CONTAINED IN THIS DRAWING IS THE SOLE PROPERTY OF ANDERSON POWER PRODUCTS. ANY REPRODUCTION IN PART OR WHOLE WITHOUT THE WRITTEN PERMISSION OF ANDERSON POWER PRODUCTS IS PROHIBITED.

Copyright 2008

ANDERSON POWER PRODUCTS RESERVES THE RIGHT TO ALTER PRODUCT TYPES, THEIR TECHNICAL DATA, DIMENSION, STYLE AND ACCESSORIES WITHOUT PRIOR NOTIFICATION.

SCREW DOWN BOARD MOUNT , YY= 02

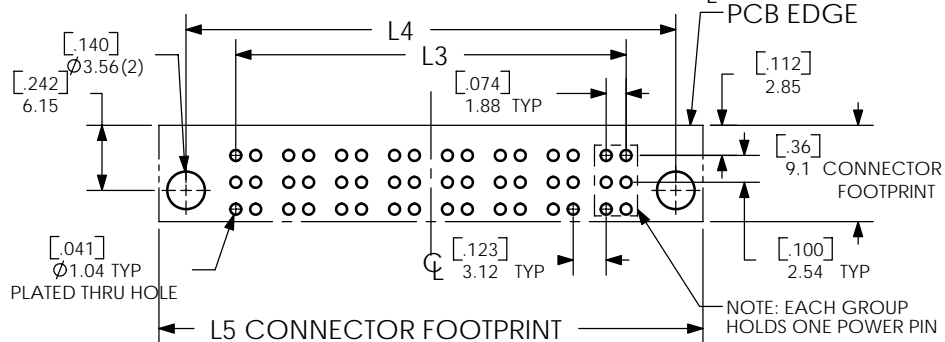
CONNECTOR VERSIONS



# OF POS	L1		L2		L3		L4		L5	
	mm	in	mm	in	mm	in	mm	in	mm	in
2	5.0	0.20	19.5	0.77	6.9	.27	16.3	.64	21.4	.84
4	15.0	0.59	29.5	1.16	16.9	.66	26.3	1.03	31.4	1.24
6	25.0	0.98	39.5	1.56	26.9	1.06	36.3	1.43	41.4	1.63
8	35.0	1.38	49.5	1.95	36.9	1.45	46.3	1.82	51.4	2.02

RECOMMENDED PCB LAYOUT

NOTE: DIMENSIONS ARE SYMMETRIC ACROSS  $\phi$



Male Power Connector- Right Angle Tail- Ordering Information										
	P	M	-	XX	P	R	01	-	0	YY
POWER										01- No Board Hardware 02-Screw Down
GENDER: MALE										
No Latch										
QTY OF CONTACTS:02,04,06,08										
LEAD LENGTH, 01= .062 PCB										
TIN (T) or Gold (L)* Plating										
RIGHT ANGLE TAIL										
* Contact Factory										

NOTES:

- MATERIAL:  
HOUSING-LCP,BLK  
POWER CONTACT-COPPER ALLOY
- CONTACT PLATING: MATTE TIN OR GOLD
- MINIMUM PUSHOUT FORCE: 4.45N[1.0 LB-F].
- PARTS TO BE PACKAGED IN TRAYS.

DIMENSIONS ARE IN:		APPROVALS		ANDERSON POWER PRODUCTS		
MM	[INCH]	DRAWN	CMS	9/11/08	TITLE <b>POWERMOD PSX MALE R/A POWER ASSEMBLY</b>	
UNLESS OTHERWISE STATED						
TOLERANCES:						
DECIMALS (INCH)	DECIMALS (MM)	ANGLES	CHECKED	DJD		11/18/08
.XX ± .02	.X ± .5	±2°	MFG APP	CHB	11/19/08	
SURFACE FINISH:			QC APP	UFN	11/19/08	
MACHINED 128 [3.2] ✓			ENG APP	DAM	11/19/08	
MOLDED 64 [1.6] ✓			SIZE		A/A4	
MATERIAL: SEE NOTES			DWG NO.		114791S1	
FINISH: SEE NOTES			REV.		1	
-CAD GENERATED DRAWING- DO NOT MANUALLY UPDATE DO NOT SCALE			SCALE		NONE	
3rd ANGLE PROJECTION			CADFILE		02806	
			SHEET		2 OF 2	

SEE SHEET 1		APPROVED	DATE
REV.	DESCRIPTION OF CHANGES		