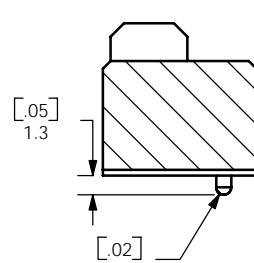
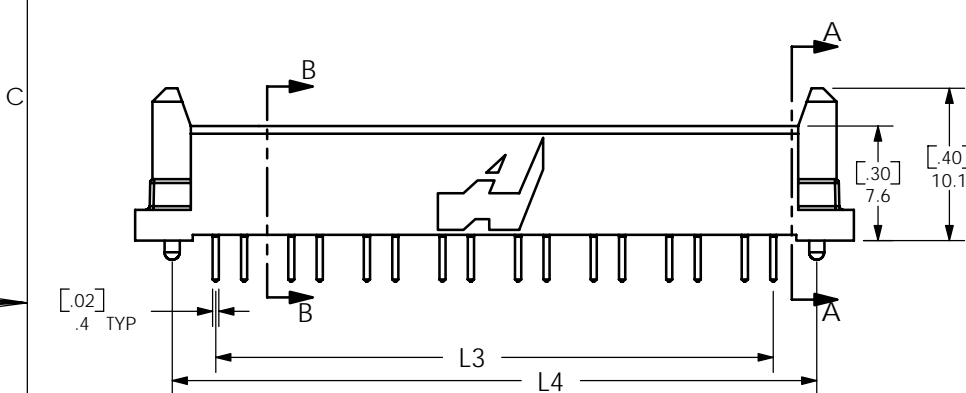
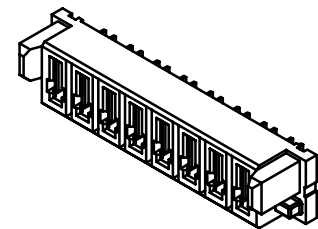
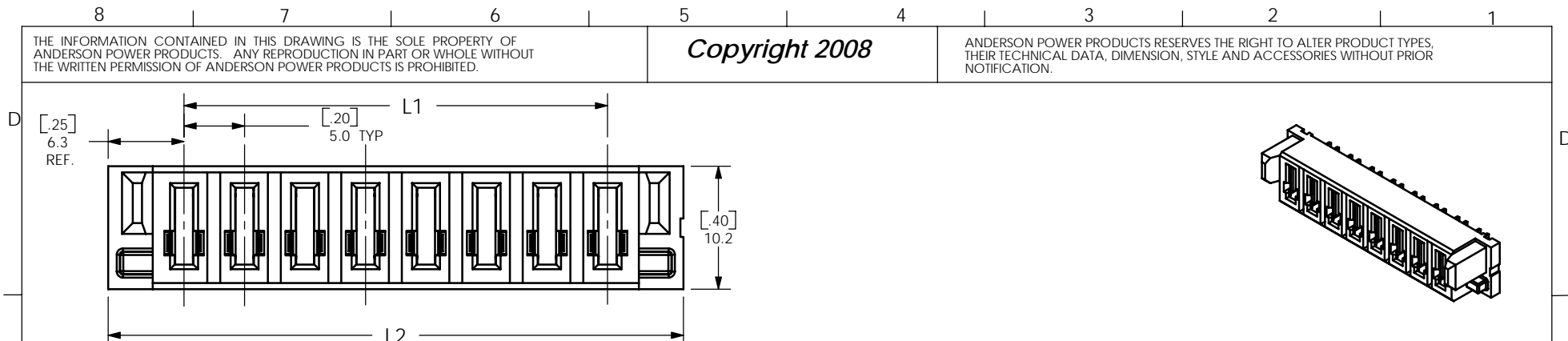


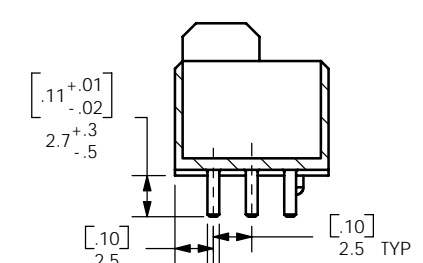
THE INFORMATION CONTAINED IN THIS DRAWING IS THE SOLE PROPERTY OF ANDERSON POWER PRODUCTS. ANY REPRODUCTION IN PART OR WHOLE WITHOUT THE WRITTEN PERMISSION OF ANDERSON POWER PRODUCTS IS PROHIBITED.

Copyright 2008

ANDERSON POWER PRODUCTS RESERVES THE RIGHT TO ALTER PRODUCT TYPES, THEIR TECHNICAL DATA, DIMENSION, STYLE AND ACCESSORIES WITHOUT PRIOR NOTIFICATION.



SECTION A-A



SECTION B-B

# OF POS.	L1		L2		L3		L4	
	mm	in	mm	in	mm	in	mm	in
2	5.0	0.20	17.5	0.69	6.9	0.27	12.6	0.50
4	15.0	0.59	27.5	1.08	16.9	0.66	22.6	0.89
6	25.0	0.98	37.5	1.48	26.9	1.06	32.6	1.28
8	35.0	1.38	47.5	1.87	36.9	1.45	42.6	1.68

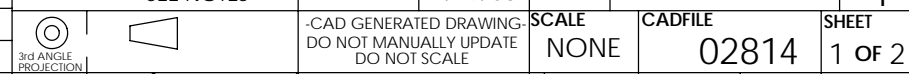
Female Power Connector- Vertical Tail- Ordering Information									
P	F	-	XX	P	V	01	-	0	YY
POWER									
GENDER: FEMALE									
QTY OF CONTACTS:02,04,06,08									
TIN (T) or Gold (L)* Plating									
LEAD LENGTH, 01= .062 PCB									
VERTICAL TAIL									
01- No board Mount Hardware 02- Locking Clip* No Latch									

* Contact Factory

- NOTES:
- MATERIAL:
HOUSING-LCP,BLK
POWER CONTACTS-COPPER ALLOY
 - CONTACT PLATING:
MATTE TIN (STANDARD)
 - MINIMUM PUSHOUT FORCE: 4.45N[1.0 LB-F].
 - PARTS TO BE PACKAGED IN TRAYS.

DIMENSIONS ARE IN:	MM[INCH]	APPROVALS		ANDERSON POWER PRODUCTS	
UNLESS OTHERWISE STATED		DRAWN	CMS	9/10/08	TITLE POWERMOD PSX FEMALE VERTICAL POWER
TOLERANCES:		CHECKED	DJD	11/18/08	
DECIMALS (INCH)	DECIMALS (MM) ANGLES	MFG APP	CHB	11/19/08	
.XX ± .02	.X ± .5 ±2°	QC APP	UFN	11/19/08	
SURFACE FINISH:		ENG APP	DAM	11/19/08	SIZE A/A4
MACHINED 128 [3.2]		SCALE NONE		DWG NO. 114806S1	REV. 1
MOLDED 64 [1.6]		SHEET 1 OF 2		CADFILE 02814	
MATERIAL: SEE NOTES		-CAD GENERATED DRAWING DO NOT MANUALLY UPDATE DO NOT SCALE			
FINISH: SEE NOTES					

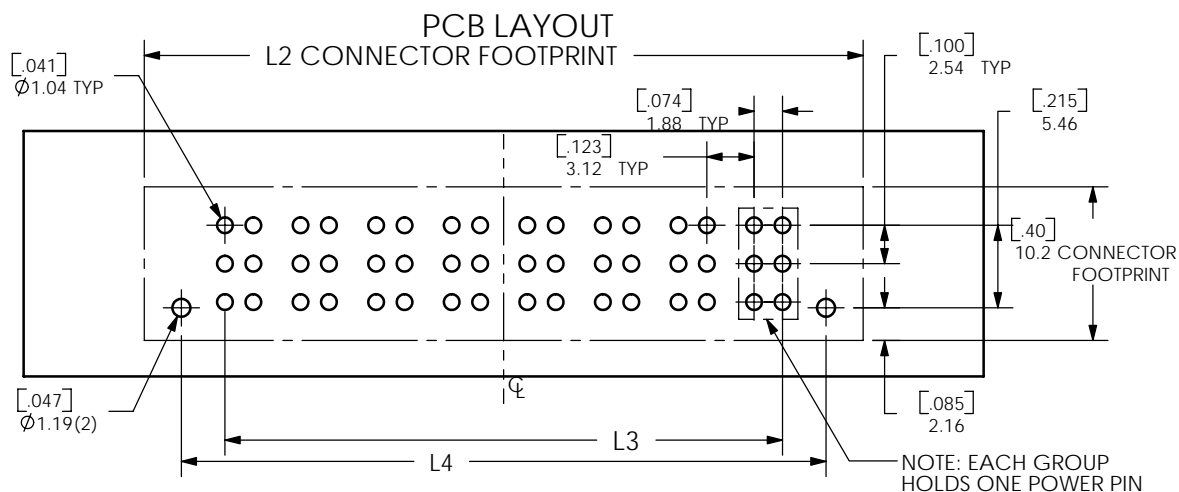
1	ECRN 14365: ADD DIMS	CMS	1/5/09
REV.	DESCRIPTION OF CHANGES	APPROVED	DATE



THE INFORMATION CONTAINED IN THIS DRAWING IS THE SOLE PROPERTY OF ANDERSON POWER PRODUCTS. ANY REPRODUCTION IN PART OR WHOLE WITHOUT THE WRITTEN PERMISSION OF ANDERSON POWER PRODUCTS IS PROHIBITED.

Copyright 2008

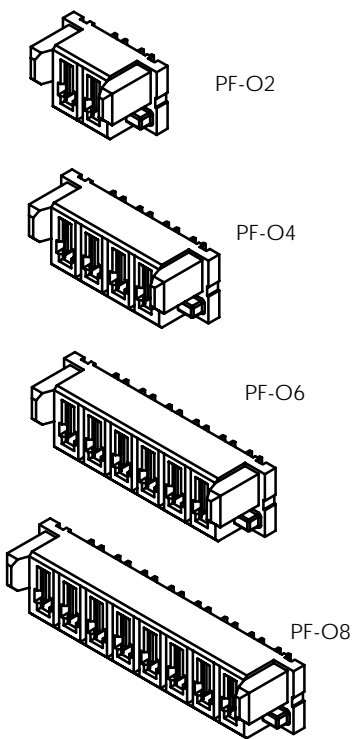
ANDERSON POWER PRODUCTS RESERVES THE RIGHT TO ALTER PRODUCT TYPES, THEIR TECHNICAL DATA, DIMENSION, STYLE AND ACCESSORIES WITHOUT PRIOR NOTIFICATION.



DIMENSIONS ARE SYMMETRIC ACROSS \mathcal{C}

# OF POS.	L2		L3		L4	
	mm	in	mm	in	mm	in
2	17.5	.69	6.88	.271	12.62	.497
4	27.5	1.08	16.88	.665	22.62	.891
6	37.5	1.48	26.88	1.058	32.62	1.284
8	47.5	1.87	36.88	1.452	42.62	1.678

CONNECTOR CONFIGURATIONS



PF-O2

PF-O4

PF-O6

PF-O8

SEE SHEET 1

DIMENSIONS ARE IN: MM [INCH]		APPROVALS		ANDERSON POWER PRODUCTS			
UNLESS OTHERWISE STATED		DRAWN	CMS	9/10/08	 TITLE POWERMOD PSX FEMALE VERTICAL POWER		
TOLERANCES:		CHECKED	DJD	11/18/08			
DECIMALS (INCH) DECIMALS (MM) ANGLES		MFG APP	CHB	11/19/08			
.XX ± .02 .X ± .5 ±2		QC APP	UFN	11/19/08			
SURFACE FINISH:		ENG APP	DAM	11/19/08	SIZE	DWG NO.	REV.
MACHINED 128 [3.2]					A/A4	114806S1	1
MOLDED 64 [1.6]					SCALE	CADFILE	SHEET
MATERIAL: SEE NOTES					NONE	02814	2 OF 2
FINISH: SEE NOTES							
 3RD ANGLE PROJECTION		-CAD GENERATED DRAWING- DO NOT MANUALLY UPDATE DO NOT SCALE					

REV.	DESCRIPTION OF CHANGES	APPROVED	DATE
8			
7			
6			
5			
4			
3			
2			
1			