

# SPEC Pak 4 Position Receptacle

## Assembly Instructions

### SPEC Pak Receptacle Kit (SK2-050B04) Components



Powerpole Holder, Receptacle



Receptacle Shell, 4 Position

### SPEC Pak Receptacle Explosion Diagram



#### 1. Wire Preparation

1a. Discrete Wire for Powerpole or Ground contacts – Strip insulation 5/16 inch (8 mm) from the end of the wires to be terminated, being careful not to damage the copper conductors. (See assembly instruction 1S1072 for complete instructions)

1b. Discrete Wires for PP4x – Strip insulation 0.19 inches (4.8mm) from wire being careful not to damage the copper conductors. (See assembly instruction 1S6505 for complete directions)

2. Terminate Contacts to individual wires by inserting contact into the recommended Anderson crimping tools and crimp. See SPEC Pak Data Sheet for additional information on contacts. Keeping all Powerpole and Ground contacts on a similar plane while crimping will make installation into Powerpole Housings and SPEC Pak Holder easier. (See Figure 1)

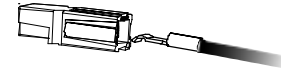


Figure 1

*Crimping with non-APP recommended tools may produce high resistance or contact distortion, resulting in improper seating of the contact in the Powerpole Housing. Use of other tools may also effect UL & CSA approval.*

3. Slide SPEC Pak Receptacle Panel Mount Sealing Gasket and Shell onto wires. Panel Sealing Gasket should be between panel and rear of SPEC Pak Receptacle. (See Figure 2)

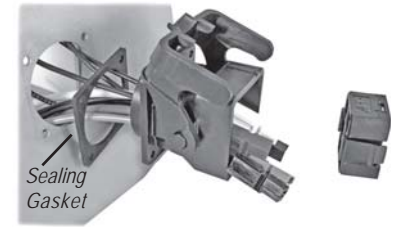


Figure 2

#### 4. Install contacts into Powerpole Housings

4a. Position Powerpole contacts as shown holding the Powerpole housings in the "hood up" position (See Figure 3a & 3b) and push contact and wire into Powerpole Housing so contact snaps into place. The contact will slip under the internal barrier and snap over the end of the internal retaining spring. Tug on wire to assure the contact is fully inserted. Repeat until all wires and contacts have been firmly locked into their respective Powerpole Housings.



Figure 3a

Figure 3b

4b. Position PP4x contacts as shown holding the PP4x housing in the "Hood up" position (See Figures 4a and 4b) and insert into housing. Socket contacts should be inserted first to ease assembly followed by the pin contacts. A tactile snap will be felt when the contact is latched. Apply a slight tug to the wire to confirm latching.

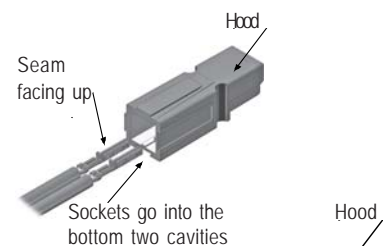


Figure 4a

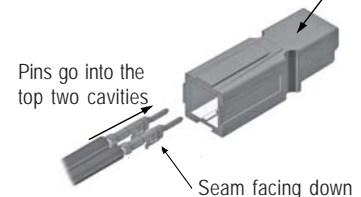


Figure 4b

**NOTE:** If the wires are rotated during insertion of the contacts so as to change the orientation of the contact seams to the housing the contacts will not snap in properly.

# SPEC Pak 4 Position Receptacle

Page 2

5. Position Holder so Arrow on front is up (See Figure 5). Insert Housings into Holder from top for position 1 & 2 and from bottom for position 3 & 4. Holder is marked with "Front".

*The standard orientation for Powerpoles in the SPEC Pak Receptacle are Hood Up. (See Figure 3b) The standard orientation for Powerpoles in SPEC Pak Plugs are Hood Down. (See Figure 3a)*

6. Once all Powerpole Housing are inserted into Holder, position the Receptacle Shell with the APP Logo on top (up position). Position Holder with arrow on front of Holder pointing in the up direction. Press Holder into Receptacle Shell until Holder Snaps into place (See Figure 6). Holder may be removed from the Receptacle Shell with a small flat screw driver. Insert screw driver beside Holder Latch and depress latch on one side (See Figure 7), then the other. Pushing on the wire or cable from the back, while depressing latches will help to remove the Holder. To re-insert the Holder repeat step 6.

7. Attach SPEC Pak Receptacle to Panel with #4 screws (not included). Make sure the surface of the panel contacting the sealing gasket is clean and dry to ensure an IP67 seal. (See Figure 8).

### Torque requirements

- Receptacle to panel: 2½ to 4 in-lbf (0.28 to 0.45 Nm)

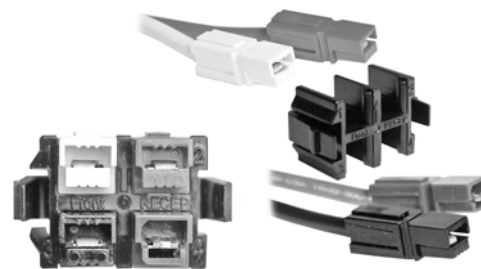


Figure 5

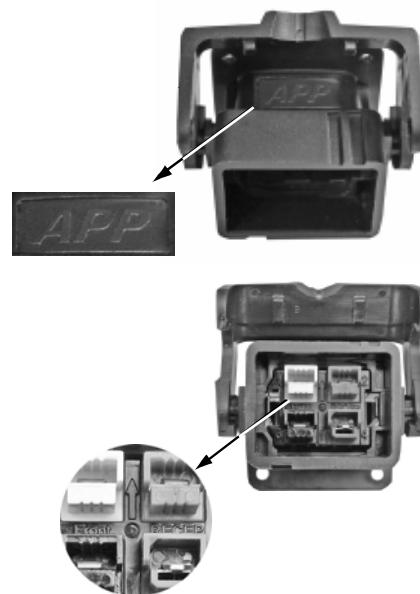


Figure 6



Figure 7



Figure 8

PATENTS AND TRADEMARKS This product is Patent Pending.

1S6510 ASM-4PSPEC REV00

HEADQUARTERS: Anderson Power Products®, 13 Pratts Junction Road, Sterling, MA 01564-2305 USA T:978-422-3600 F:978-422-3700

EUROPE: Anderson Power Products® Ltd., Unit 3, Europa Court, Europa Boulevard, Westbrook, Warrington, Cheshire, WA5 7TN United Kingdom T: +44 (0) 1925 428390 F: +44 (0) 1925 428399

ASIA / PACIFIC: IDEAL Anderson Asia Pacific Ltd., Unit 922-928 Topsail Plaza, 11 On Sum Street, Shatin N.T., Hong Kong T: +(852) 2636 0836 F: +(852) 2635 9036

CHINA: IDEAL Anderson Technologies (Shenzhen) Ltd., Block A8 Tantou Western Industrial Park, Songgang Baoan District, Shenzhen, P.R. China 518105 T: +(86) 755 2768 2118 F: +(86) 755 2768 2218

TAIWAN: IDEAL Anderson Asia Pacific Ltd., Taiwan Branch, 4F-2, No.116, Dadun 20th St., Situn District, Taichung City 407, Taiwan (R.O.C.) T: +(886) 4 2310 6451 F: +(886) 4 2310 6460

[www.andersonpower.com](http://www.andersonpower.com)