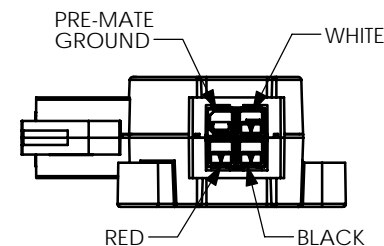
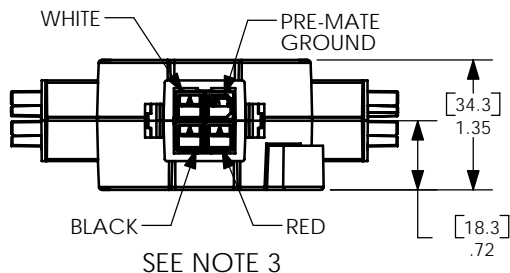
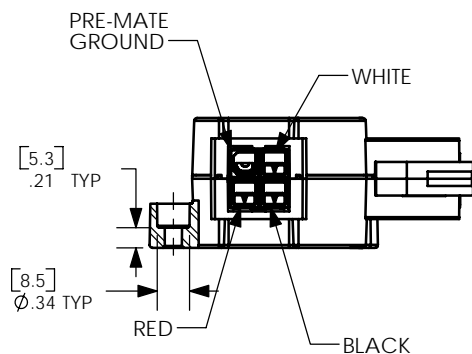
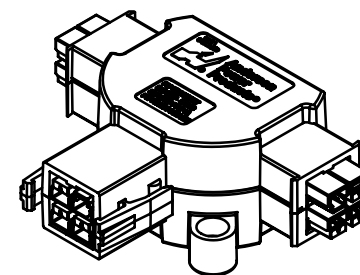
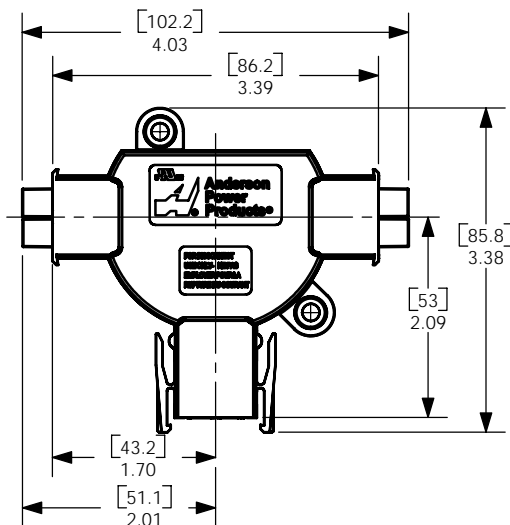
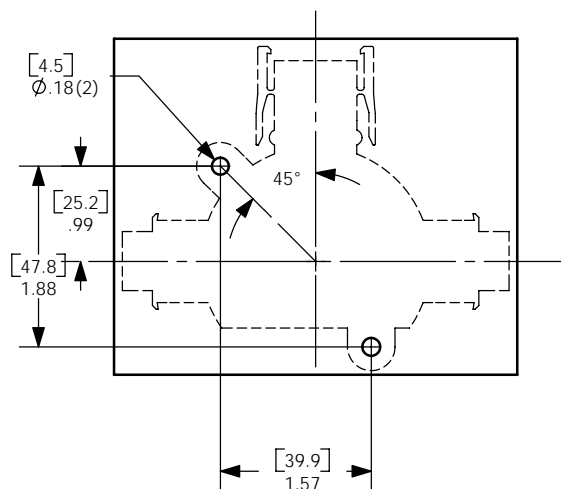


THE INFORMATION CONTAINED IN THIS DRAWING IS THE SOLE PROPERTY OF ANDERSON POWER PRODUCTS. ANY REPRODUCTION IN PART OR WHOLE WITHOUT THE WRITTEN PERMISSION OF ANDERSON POWER PRODUCTS IS PROHIBITED.

Copyright 2008

ANDERSON POWER PRODUCTS RESERVES THE RIGHT TO ALTER PRODUCT TYPES, THEIR TECHNICAL DATA, DIMENSION, STYLE AND ACCESSORIES WITHOUT PRIOR NOTIFICATION.

MOUNTING HOLE PATTERN



- NOTES:
1. ASSEMBLY IS PROVIDED COMPLETE, AS SHOWN
 2. MATERIALS- SEE DATA SHEET, ALL COMPONENTS ARE RoHS COMPLIANT
 3. 2X2 POWERPOLE BLOCK AT THE CENTER OF THE T ARE ARRANGED UPSIDE DOWN FROM THE SIDE BLOCKS. MATING POWERPOLE PAK PLUG ASSEMBLIES MUST BE CONFIGURED CORRECTLY IN ORDER TO MATE.
 4. RECOMMENDED #8 x 1/2 - 3/4 or M4 x 13-20mm SCREWS FOR MOUNTING

DIMENSIONS ARE IN: INCH[MM]		APPROVALS		ANDERSON POWER PRODUCTS	
UNLESS OTHERWISE STATED		DRAWN	CMS 5/5/08	TITLE T-PAK CAT. NO. 20-01 R-WH-BLK- GND	
TOLERANCES:		CHECKED	DJD 5/7/08		
DECIMALS (INCH)	DECIMALS (MM)	ANGLES	MFG APP		
.XX ±.02	.X ±.5	±2°	CHB 5/12/08		
SURFACE FINISH:		QC APP	UFN 5/6/08	SIZE	DWG NO.
MACHINED	128 [3.2] ✓	ENG APP	DAM 5/7/08	A/A4	114776S1
MOLDED	64 [1.6] ✓	MATERIAL: SEE NOTES		REV.	0
FINISH: NONE		CAD GENERATED DRAWING. DO NOT MANUALLY UPDATE. DO NOT SCALE		SCALE	CADFILE
				NONE	02777
				SHEET 1 OF 1	

REV.	DESCRIPTION OF CHANGES	APPROVED	DATE
8			